

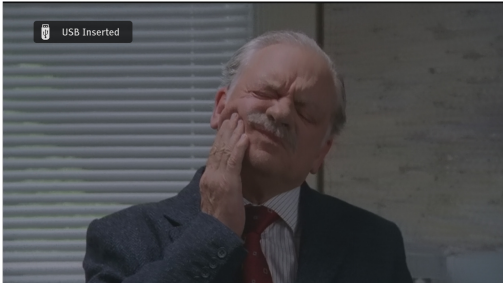
Manhattan Plaza HD-S

How to upgrade software to version 1.47

IMPORTANT

After software upgrade, please reset your receiver by applying **Restore Factory Default** function. This is found in the System setup menu. After reset, please retune the channels.

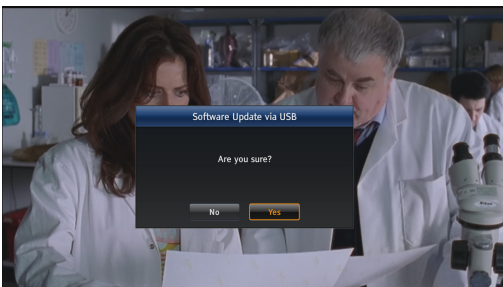
1. Copy the **usb.bin** file to a USB memory stick.



2. Connect the USB memory stick to the USB connector at the back of the receiver and wait until TV screen displays **USB Inserted** for a few seconds.



3. Press **MENU** button to display the **Setup** options. Press the Left button once to go to **System** setup. Press the Down button and scroll down to the **Software Update via USB** option then press the OK button.

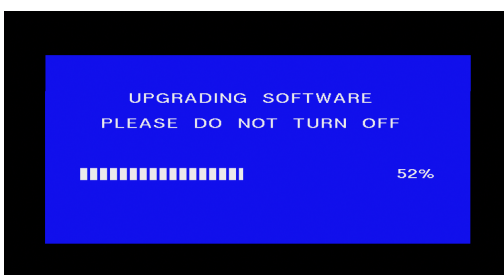


4. **Software Update via USB** screen will be displayed on your TV. Press the OK button when **Yes** option is highlighted and the software upgrade will start after a couple of seconds followed by displaying below updating screens.



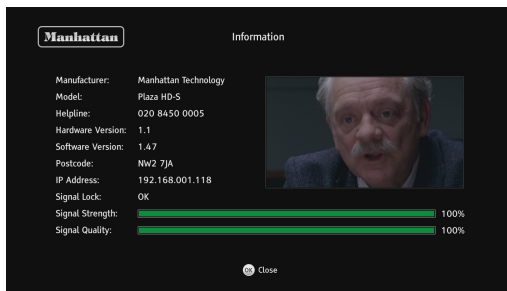
Information and update progress

Loading data from USB



Information and update progress

Upgrading software. After upgrade has finished, the receiver will reboot and display the current channel on your TV screen. After channel is displayed, disconnect the USB memory stick.



Information

You can check the upgraded Software Version in the **Information** menu. Press MENU button then scroll down to **Information** and press OK button. Press the EXIT button after you have finished checking.

Issue 1.5 01/02/2013